

Hybrid scaffold manufacturing for tissue engineering applications

Dr. Christian Mendoza-Buenrostro

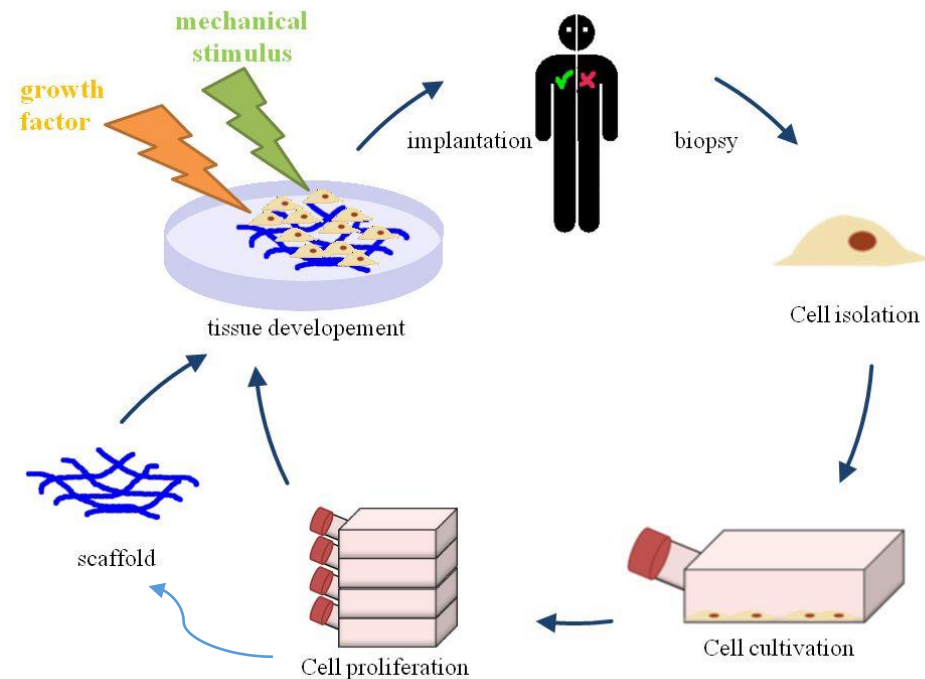
Centro de Innovación en Diseño y Tecnología

ITESM, Monterrey



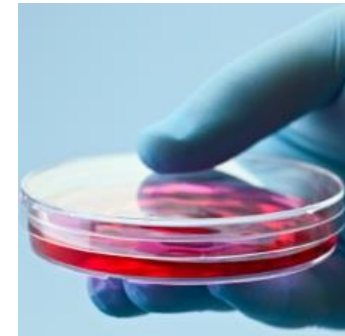
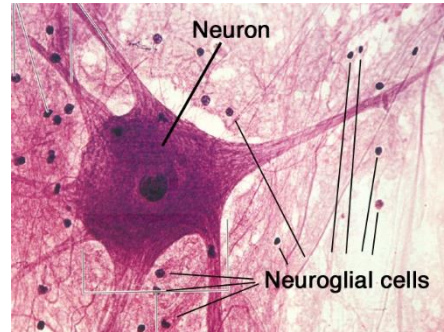
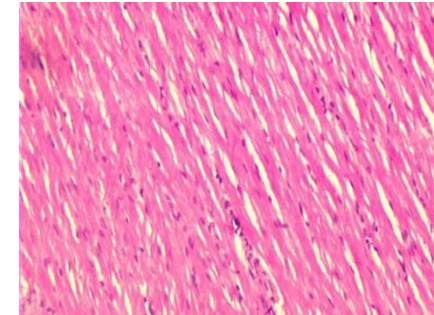
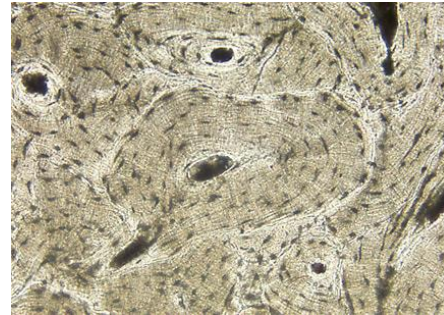
Introduction: Tissue Engineering

- Tissue Engineering: “A field of study in which knowledge about cells, cellular environment, and materials join together in order to improve or regenerate living tissue and its function”.



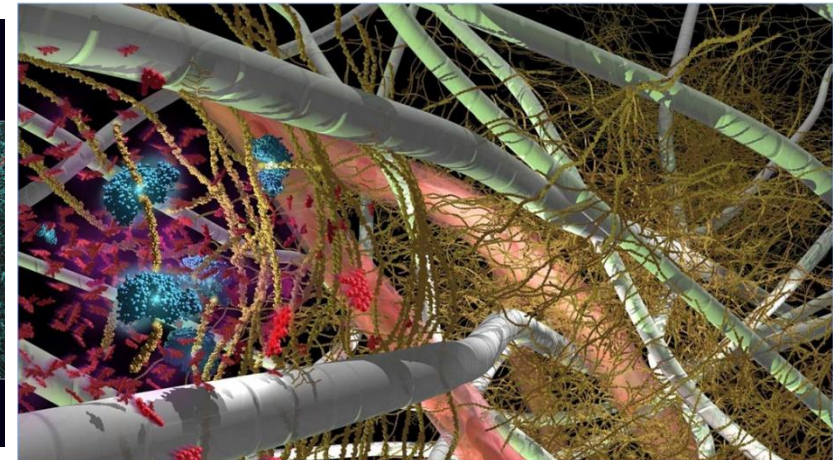
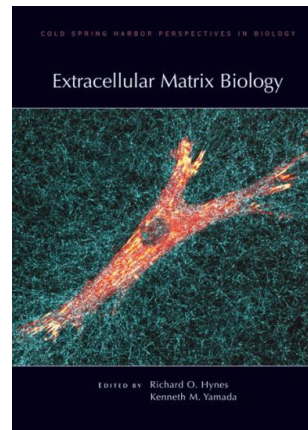
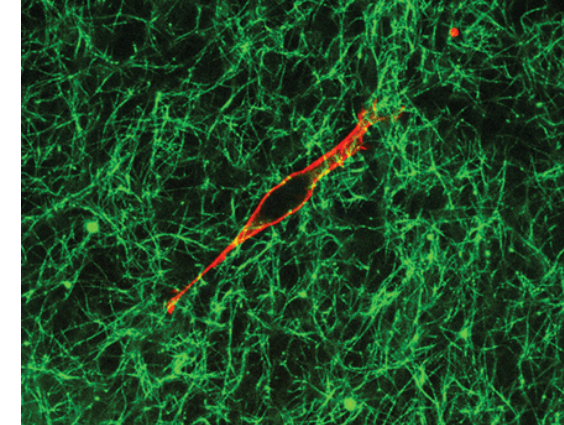
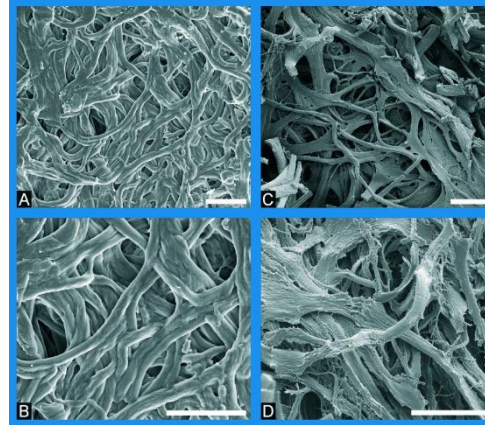
Introduction: Cell cultures

- Cell cultures of different cell types, such as osteoblasts and neurons are grown in laboratories for tissue engineering and cellular therapies applications.
- These tissues have the objective of replacing damaged tissue (epithelial, connective, muscular, neural).
- Petri dishes (2D) are commonly employed for cell cultures. However, tissues *in vivo* are not limited by a 2D structure, they are rather found in an intricate 3D structure, which in turn forms the extra cellular matrix (ECM).



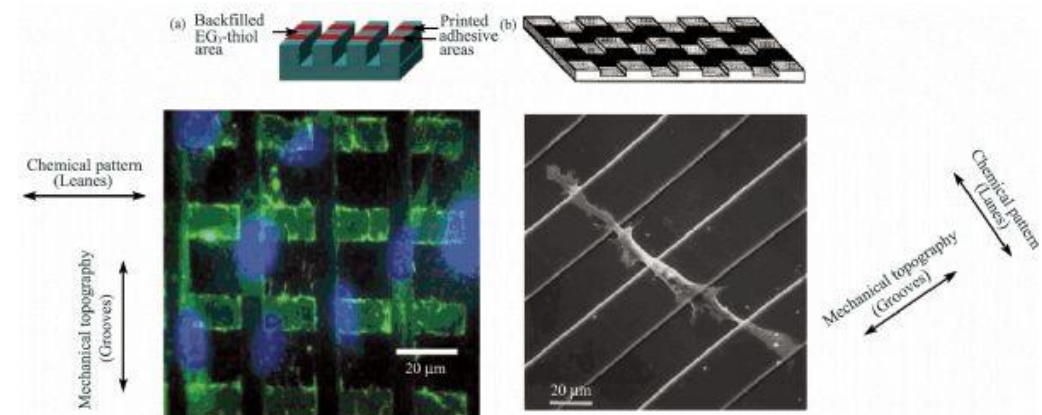
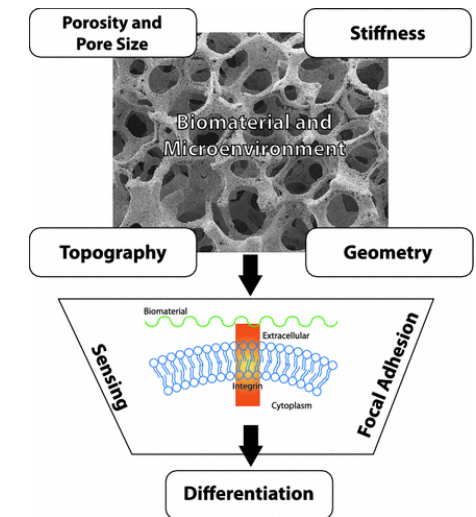
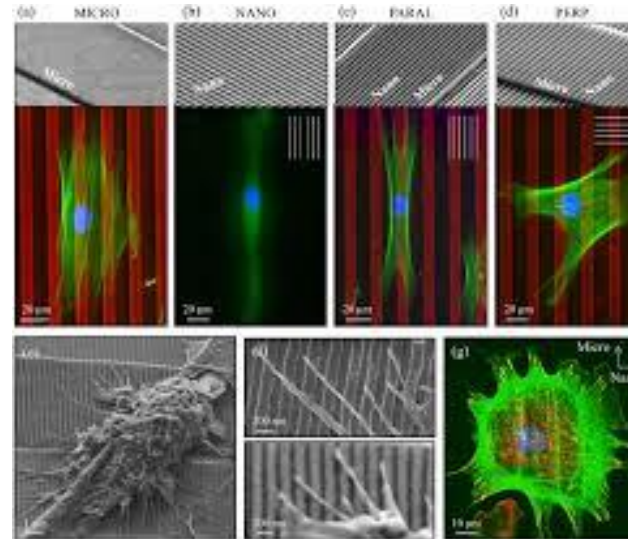
Extra Cellular Matrix

- Some functions of the ECM are to provide support for the cellular adhesion, allow for communication, and differentiation towards a specific cell type.
- Cells grown in traditional 2D Petri dishes may not develop and behave in the same manner as their *in vivo* counterparts, due to a lack of appropriate ECM signaling, such as biochemical or physical cues.



Extra Cellular Matrix

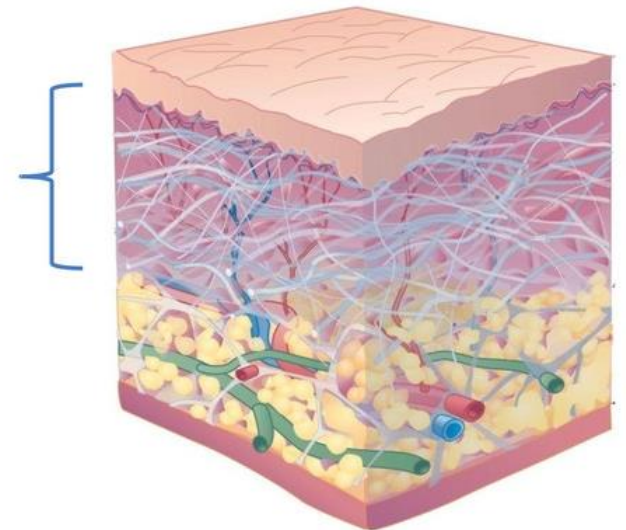
- ECM topography, stiffness, geometry and chemistry play an important role in cellular fate.
- For example, the Young Modulus for the ECM of osteoblast differs greatly from the Young Modulus of the neuronal ECM.



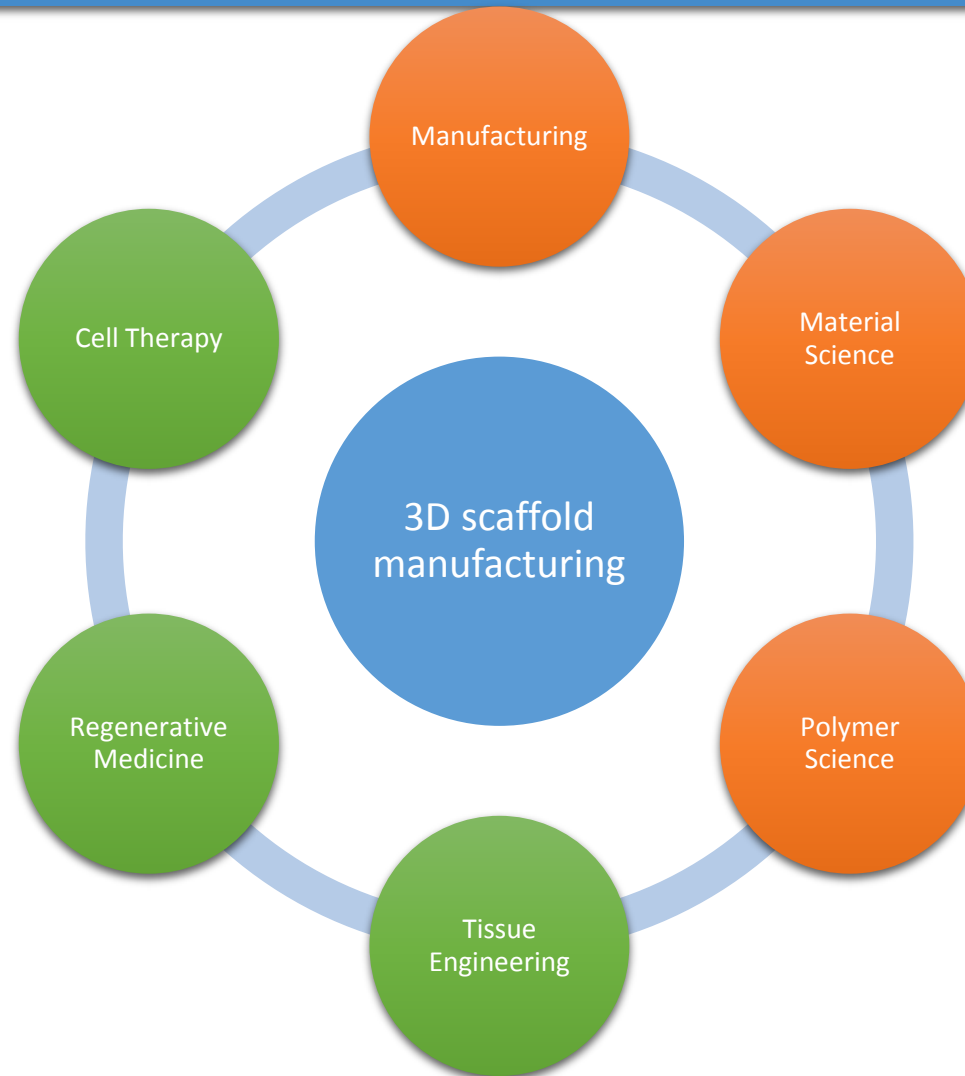
3D scaffolds for Tissue Engineering

- Therefore, it is of great interest to develop materials and techniques that allow us to fabricate scaffolds in an intrinsically 3D structure so they could better approximate *in vivo* ECM.
- Important aspects to consider when building scaffolds for tissue engineering applications are:
 - Mechanical stability
 - Porosity
 - Surface chemistry
 - Topography
 - Biocompatibility
 - Pore interconnectivity

Complex matrix of proteins and carbohydrates that surround the cell



Research areas involved (Engineering + Life Sciences)



Two general approaches in 3D bioprinting

Scaffold based

- Scaffolds are first manufactured, cells are then seeded and cultivated on the scaffold.
- The scaffold provides a framework for cells to attach, proliferate, and even orient their growth.

Scaffold free

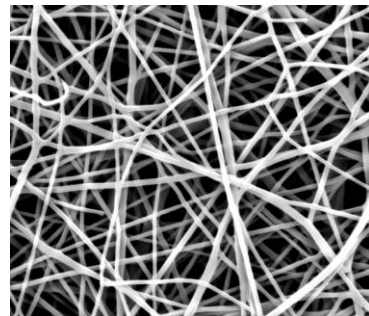
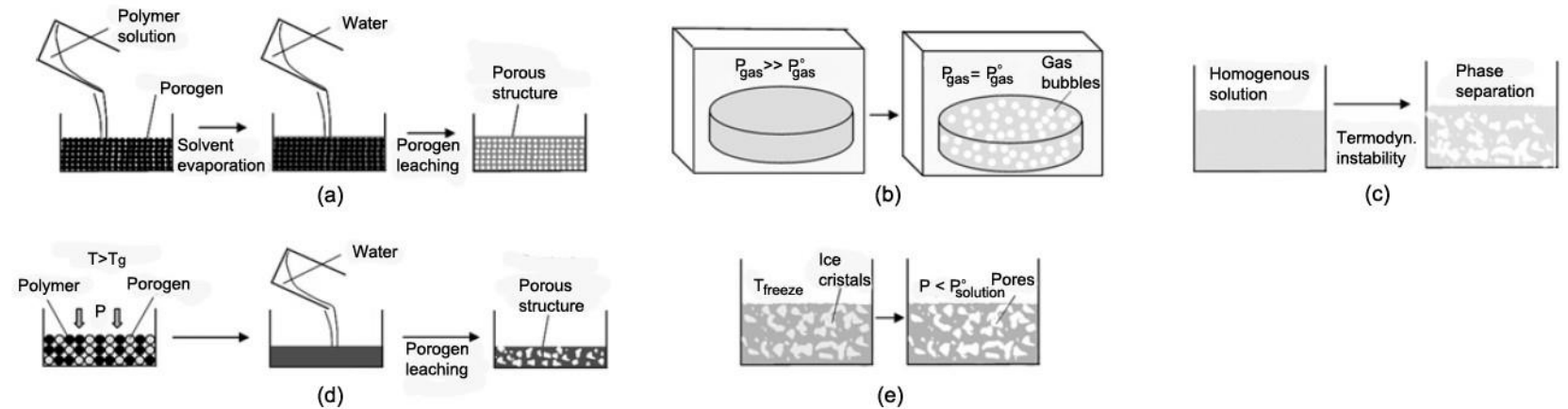
- Cells are placed in a three-dimensional way, using hydrogels as supporting structure.
- This approach relies on the ability of cells to form their own ECM.

Conventional Scaffold Fabrication Techniques



Conventional scaffold fabrication techniques

- Solvent casting
- Particulate leaching
- Gas foaming
- Phase separation
- Melt molding
- Freeze drying
- Electrospinning



Solvent toxicity and pore size control
Not great control in porous size and geometry
Cells seeded afterwards scaffold fabrication

2D biofabrication techniques

- Laser-based (1999)
 - Laser-Guided Direct Writing (LGDW)
 - Matrix Assisted Pulsed Laser Evaporation Direct Write (MAPLE DW)
 - Biological Laser Printing (BioLP)
 - Laser Assited Bioprinting (LAB)

- Inkjet printing (2003)
 - Thermal inkjet
 - Electrostatic inkjet
 - Piezoelectric inkjet

Materials:

- Matrigel
- Alginate
- Fibrin
- Collagen
- PVA
- Agarose

Cells:

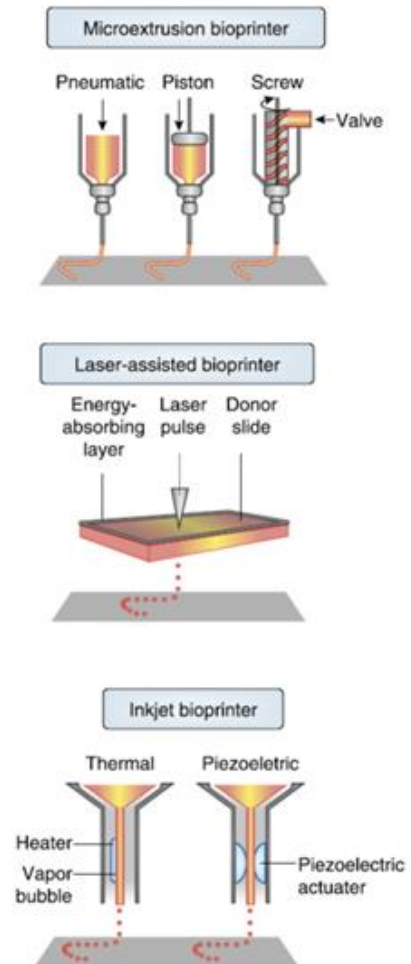
- Osteoblast
- Endothelial
- Proteins
- HeLa
- Fibroblasts

Towards 3D bioprinting



Additive Manufacturing (Rapid Prototyping)

- A) Nozzle-based (extrusion/dispension)
 - Fused deposition modeling (FDM)
 - Precision extrusion manufacturing (PEM)
- B) Laser-based (photopolymerization)
 - Selective Laser Syntering (SLS)
 - Stereolithography (SLA)
 - μ -SLA
 - Multi-photon polymerization
- C) Printer-based
 - 3DP
 - Inkjet printing

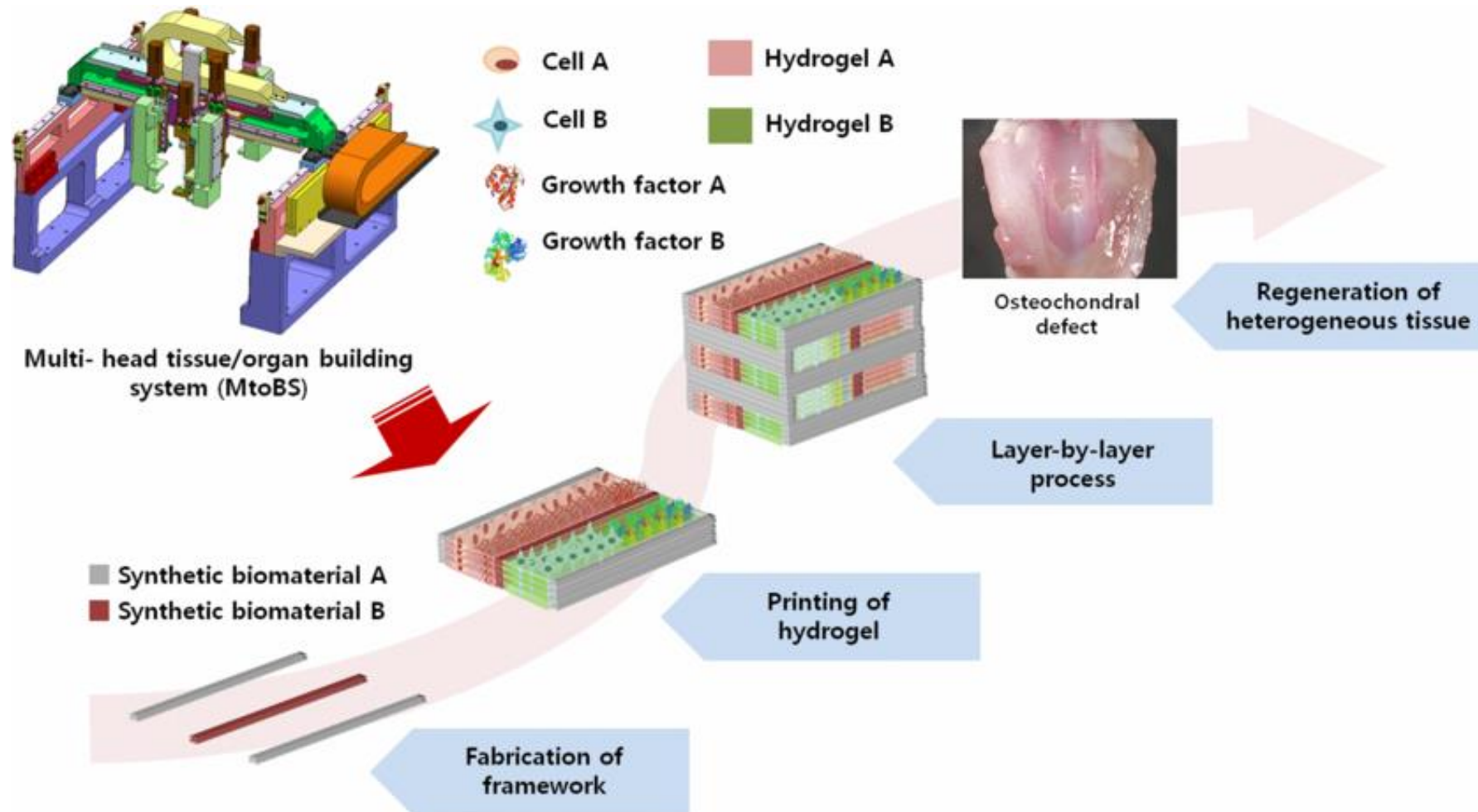


Nozzle-based

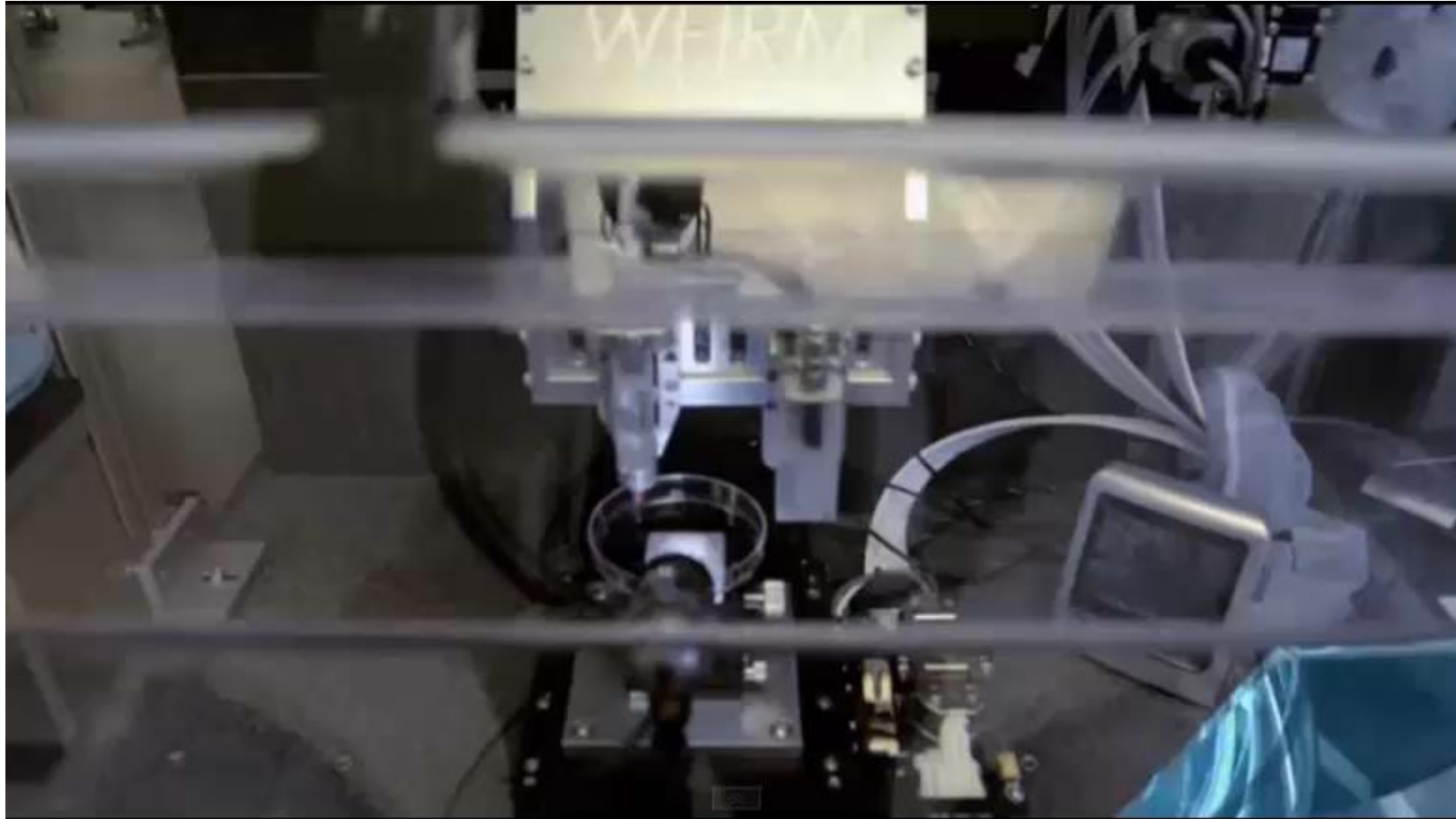
Nozzle-based rapid prototyping techniques for TE

- **Melting process**
 - Fused deposition modeling (FDM)
 - 3D fibre deposition
 - Precision extrusion deposition (PED)
 - Precision extrusion manufacturing (PEM)
 - Multiple jet solidification (MJS)
- **Non melting process**
 - Pressure-assisted microsyringe (PAM)
 - Low-temperature deposition modeling (LDM)
 - 3D-Bioplotter
- **Materials:**
 - PCL
 - PLA
 - PEG
 - Gelatin
 - Hyaluronic acid
 - Alginate
 - Fibrinogen
 - Chitosan
 - Collagen
 - Hydroxiapatite
 - PLGA
 - Matrigel
 - PEO
 - Methylcellulose
 - Agarose
- **Cells:**
 - Adipose-derived stromal cells (ADSC)
 - Hepatocytes
 - HepG2
 - Human intestinal epithelial cells
 - NIH 3T3
 - Chondrocytes
 - Multipotent stromal cells (MSCs)
 - Bone marrow stromal cells (BMSCs)
 - Human fibroblasts
 - Bovine aortic endothelial cells (BAECs)
 - Endothelial cells
 - Schwann cells
 - Neurons

Nozzle-based techniques for TE



Nozzle-based RP for TE

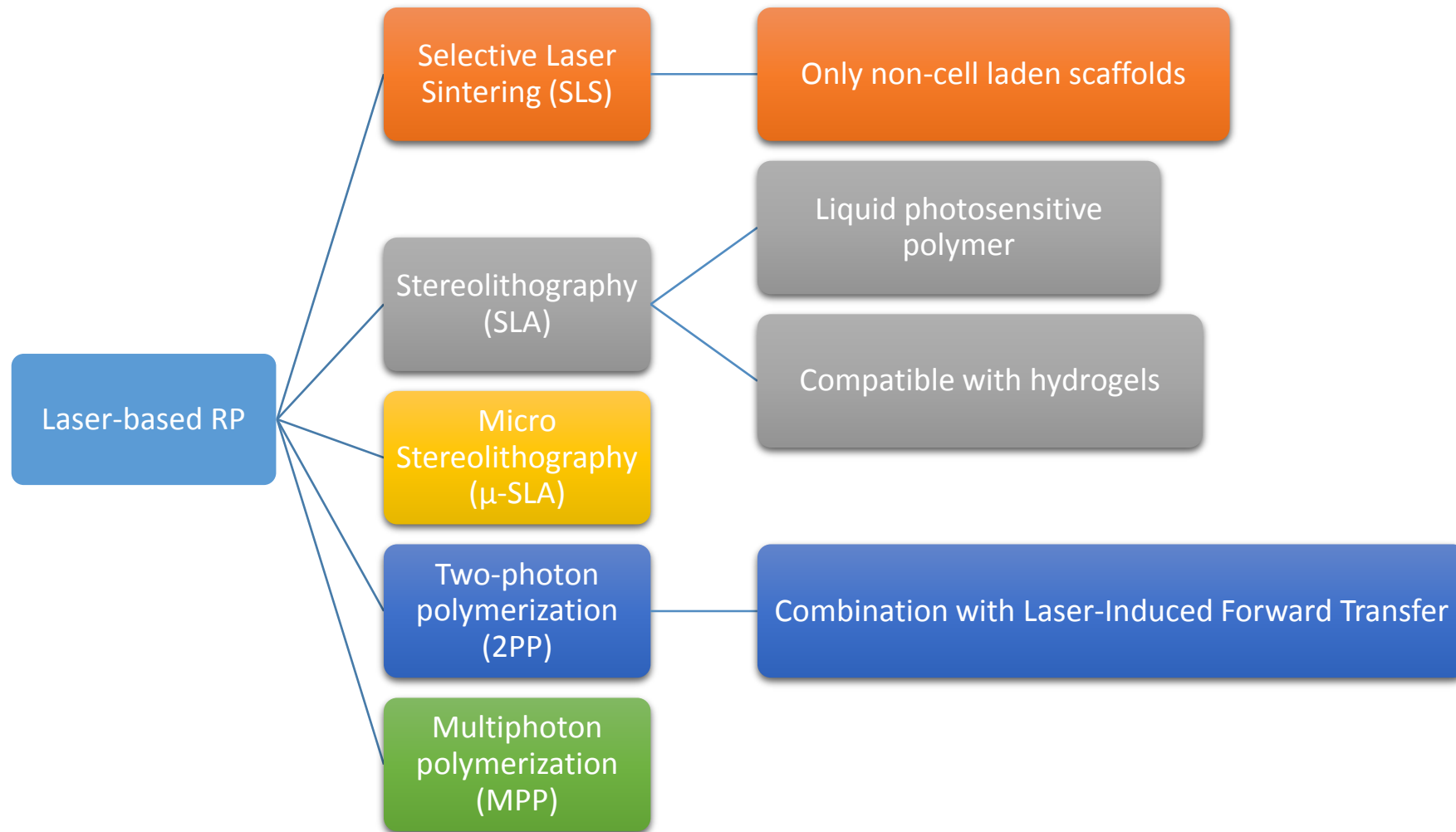


Nozzle-based rapid prototyping limitations

- Limited resolution (45 - 1600 μm)
- Limited mechanical strength
- Smooth surface
- Low accuracy
- Slow processing
- High equipment purchase costs

Laser-based

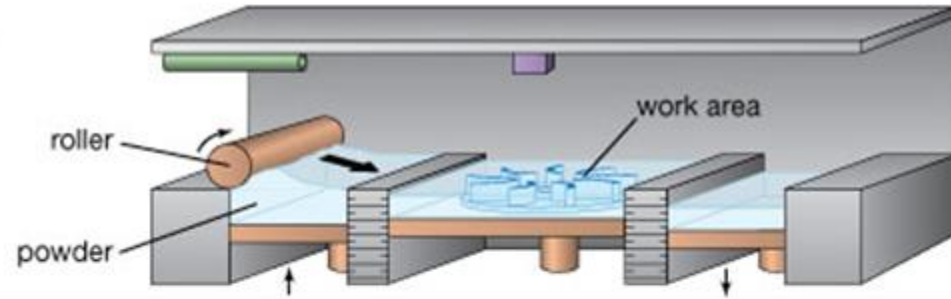
Laser-based rapid prototyping techniques for TE



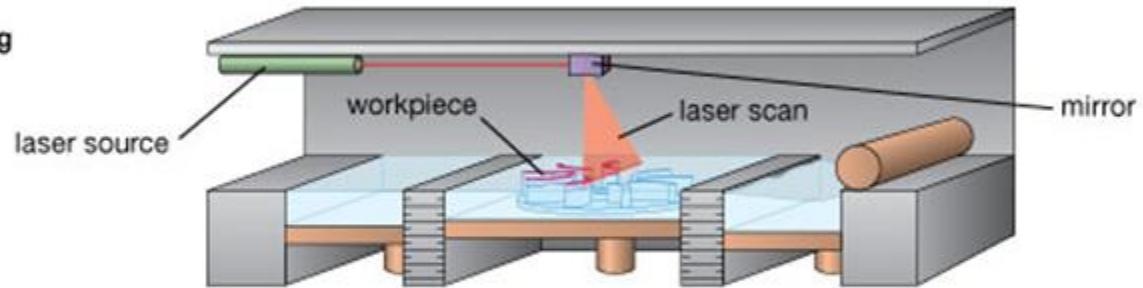
Laser-based rapid prototyping techniques for TE

SLS

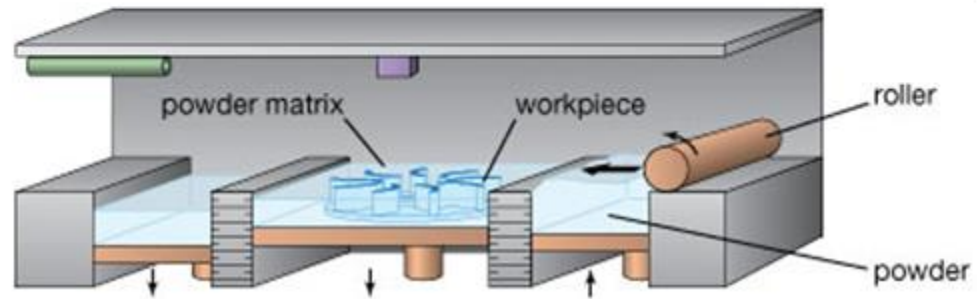
powder layering



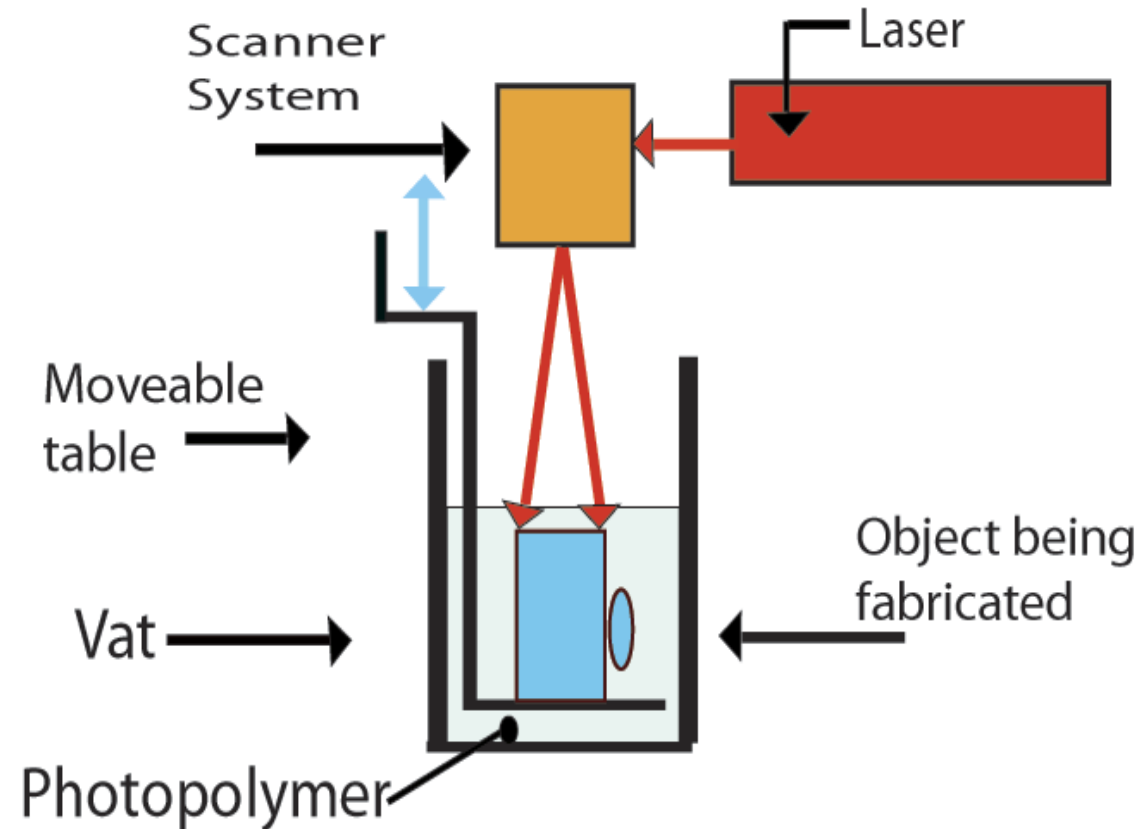
laser sintering



powder layering



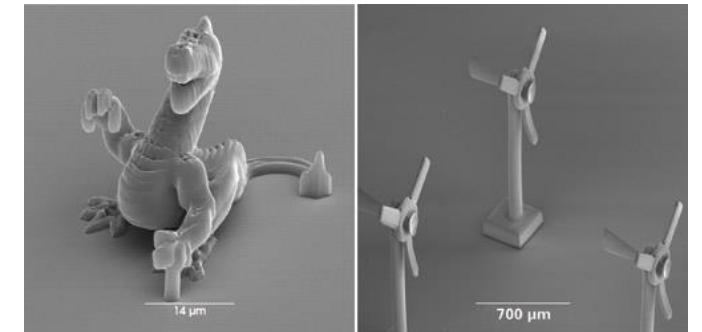
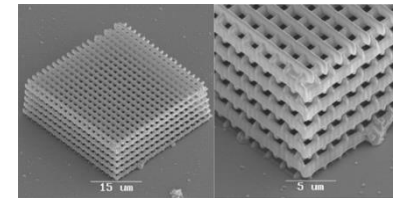
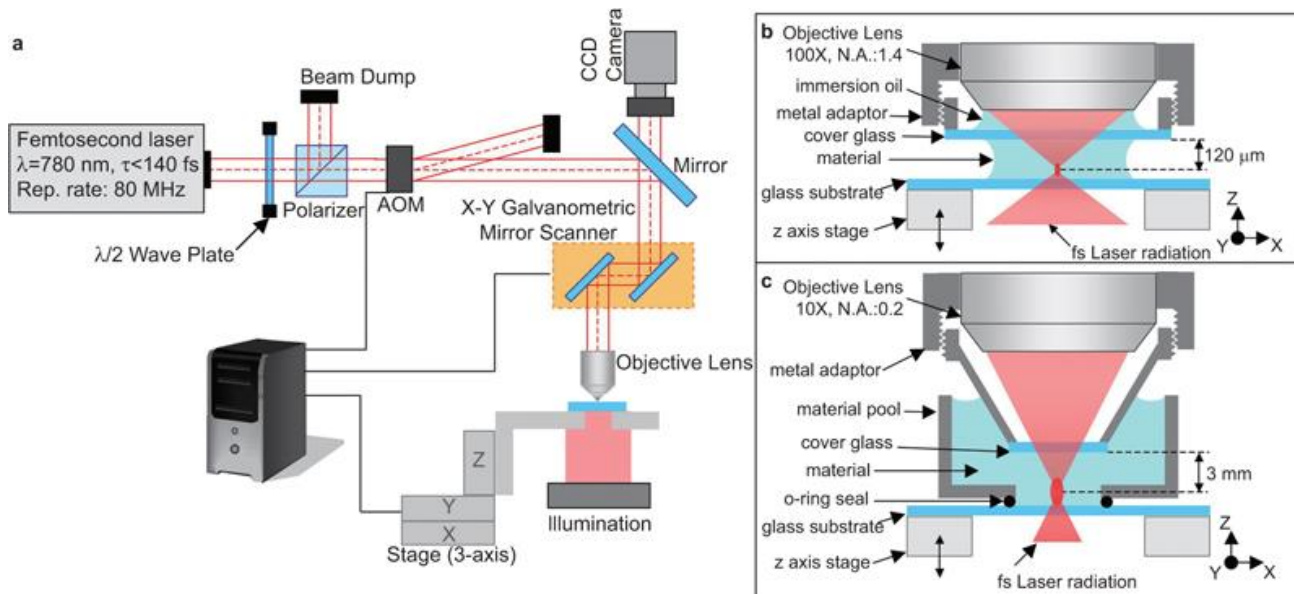
Laser-based rapid prototyping techniques for TE



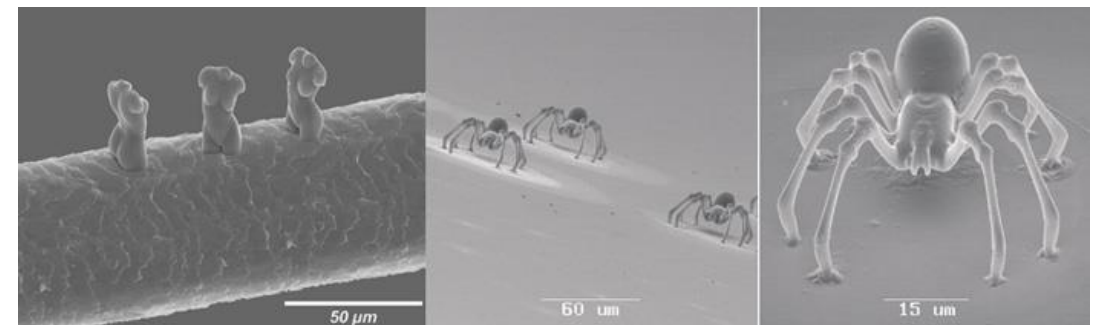
Stereolithography (SLA)

Laser-based rapid prototyping techniques for TE

- Two-photon polymerization



Resolution: 100 – 200 nm



Laser-based rapid prototyping techniques for TE

- Selective Laser Sintering (SLS)
- Stereolithography (SLA)
- Micro-stereolithography (μ -SLA)
- Two-photon polymerization (2PP)
- Multi-photon polymerization (MPP)
- Hydrogel Materials
 - Gelatin-methacrylate
 - Hyaluronic acid-methacrylate
 - Agarose
 - HEMA
 - PEG-D(M)A
 - Alginate
 - PEG-DA
 - Fibronectin
 - Bovine serum
 - BSA
- Encapsulated cells
 - Fibroblasts (NIH-3T3)
 - Human hepatoma cells (HepG2)
 - Hepatocytes
 - Human dermal fibroblasts
 - Marrow stromal cells
 - Chondrocytes

Printer-based

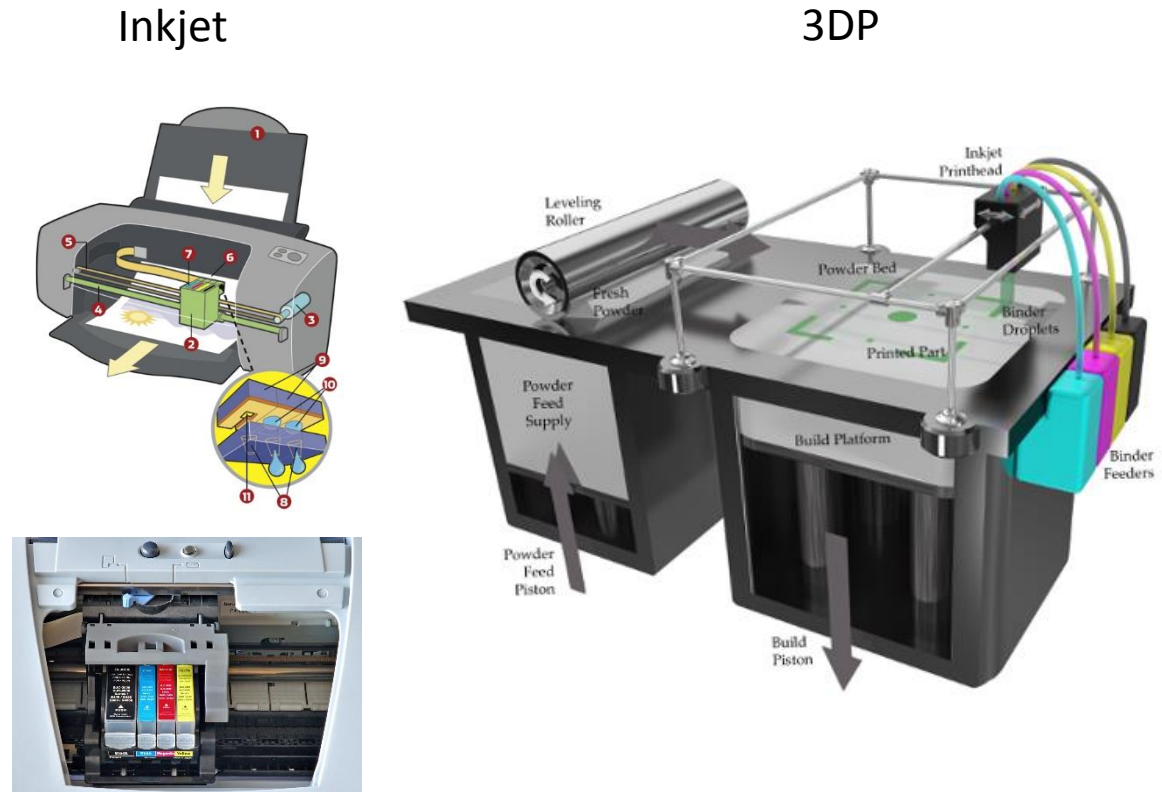
Printer-based rapid prototyping for TE

- Inkjet

- Hydrogels

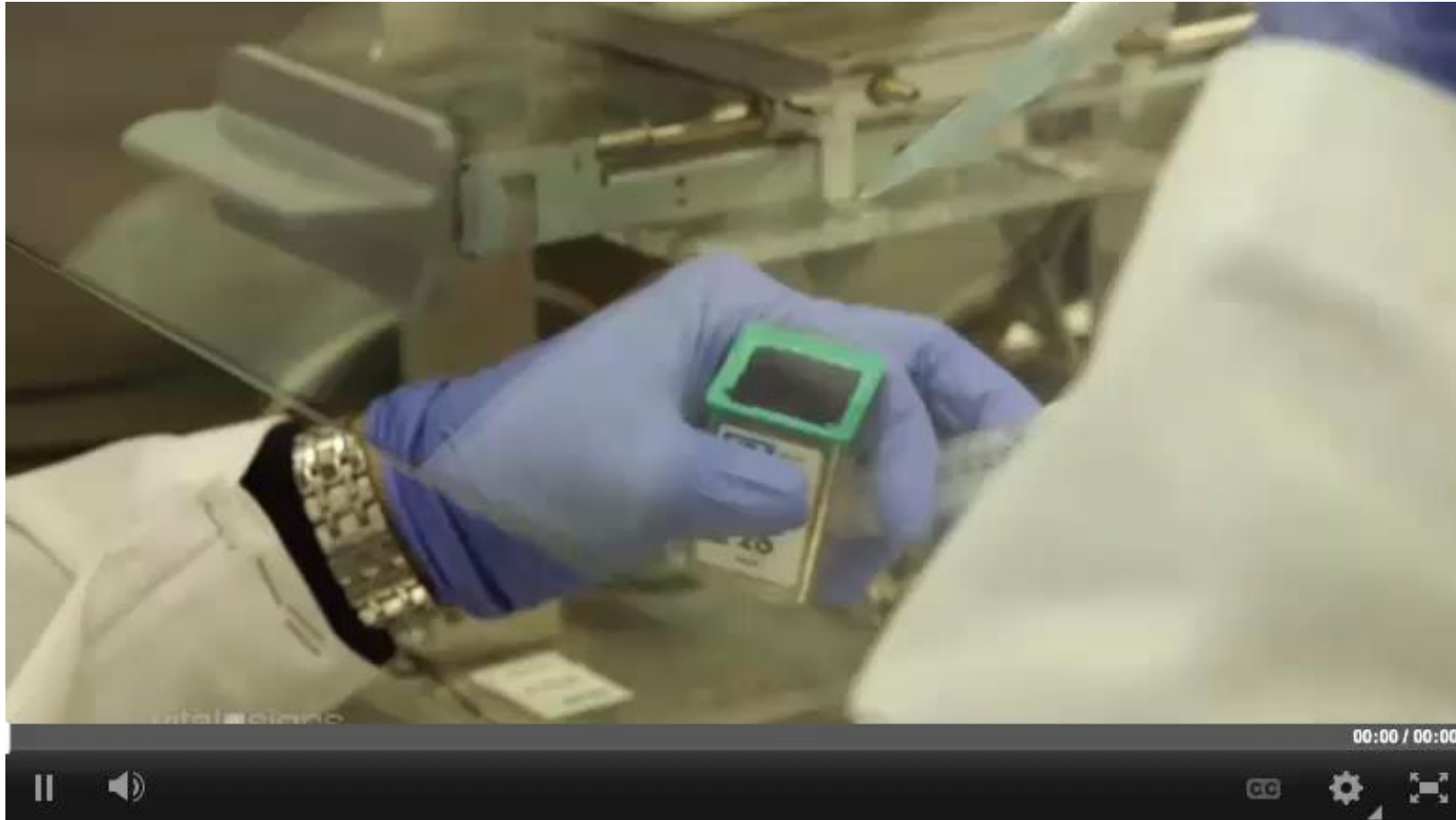
- 3DP™

- Ceramic
- Metal
- Metal-ceramic composites
- Polymers (PCL, PLA, PEO)

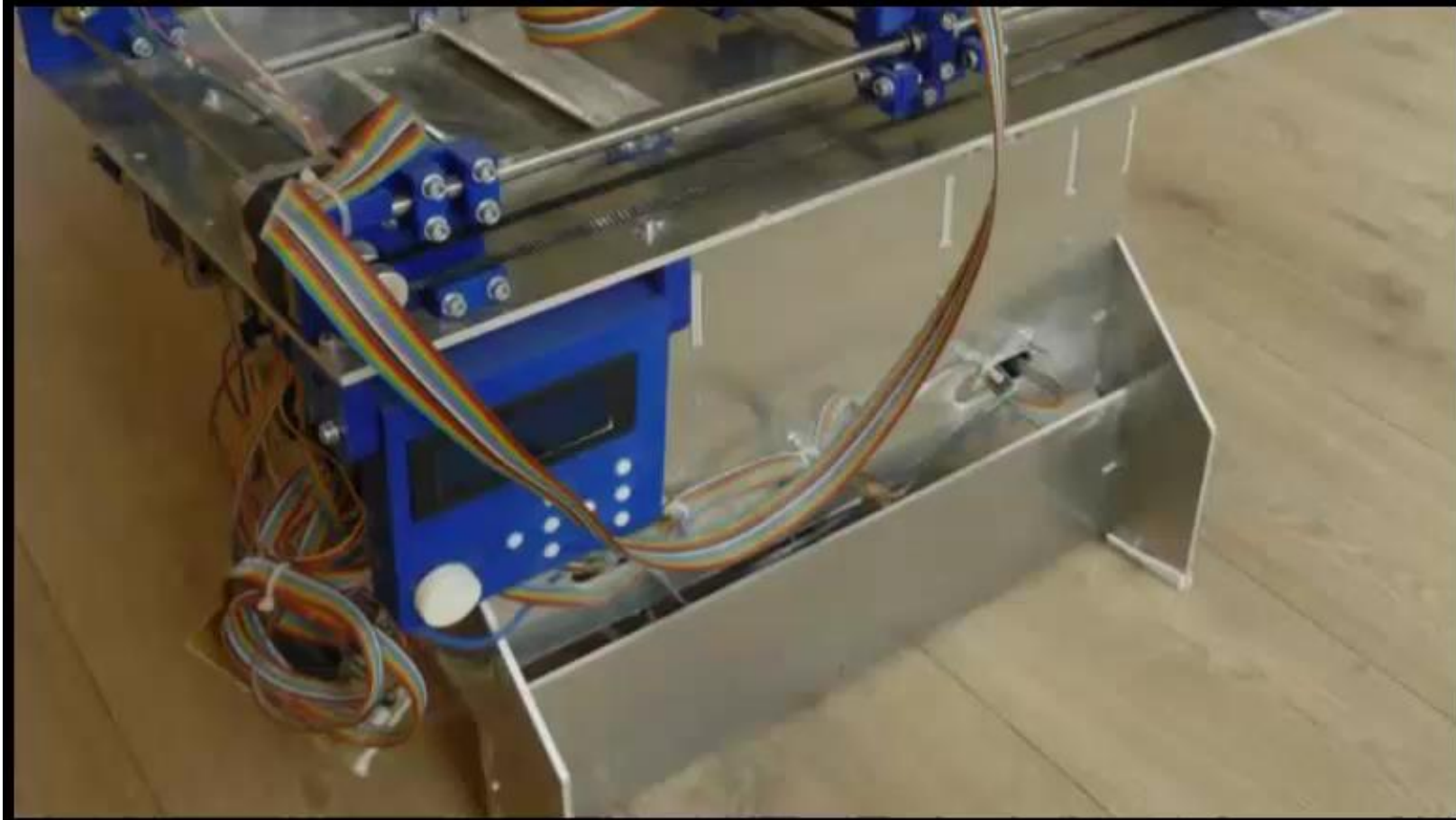


Requires biocompatible powder-binder systems

Inkjet rapid prototyping for TE



3DP

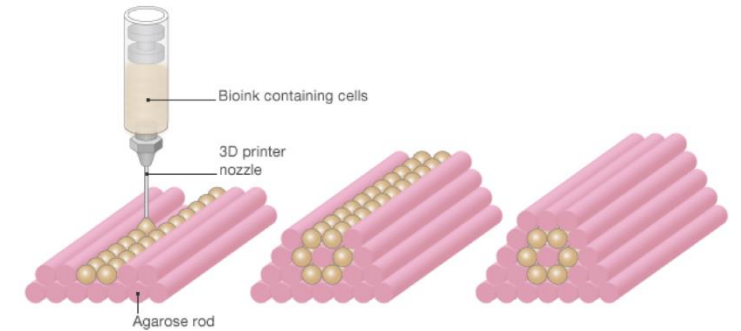


Printer-based rapid prototyping limitations

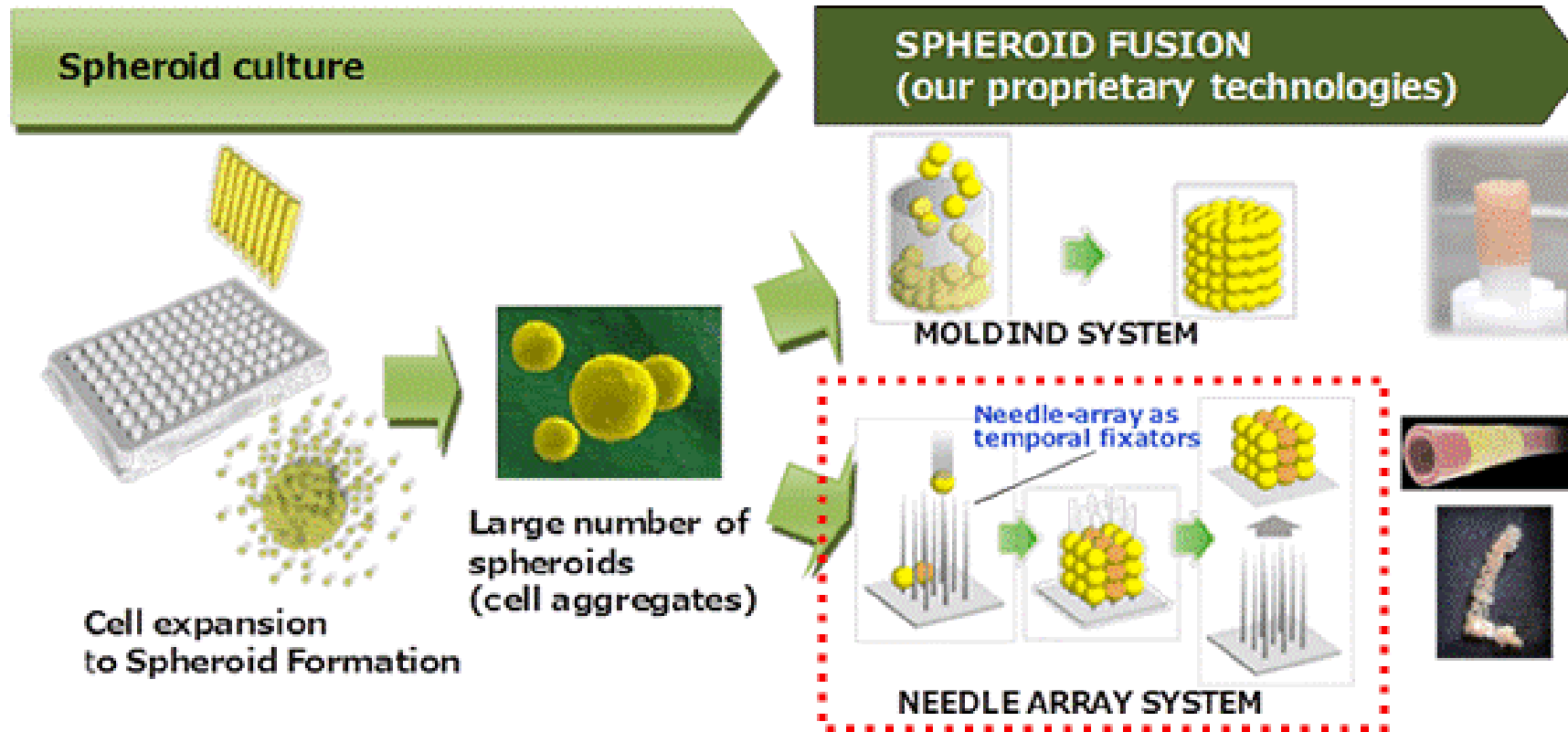
- Mechanical strength (post-processing often required)
- Powder entrapment
- Resolution 100 μm
- Binder droplet size and accuracy of drop placement
- Clogging of small binders jets
- Pore sizes of the fabricated scaffolds limited by powder grain size.
 - Available pore sizes 50 μm -250 μm

Current trends on scaffold manufacturing for tissue engineering applications

- Bioprinting (extrusion)
 - Cell-seeded alginate hydrogel
 - Spheroids with several cell types
 - Extrusion based + cell-seeded hydrogel
 - Decellularized ECM (dECM)
- Ink-jet printing
- Powder printing
- Multi-photon polymerization
 - Combination with laser-induced forward transfer (LIFT)

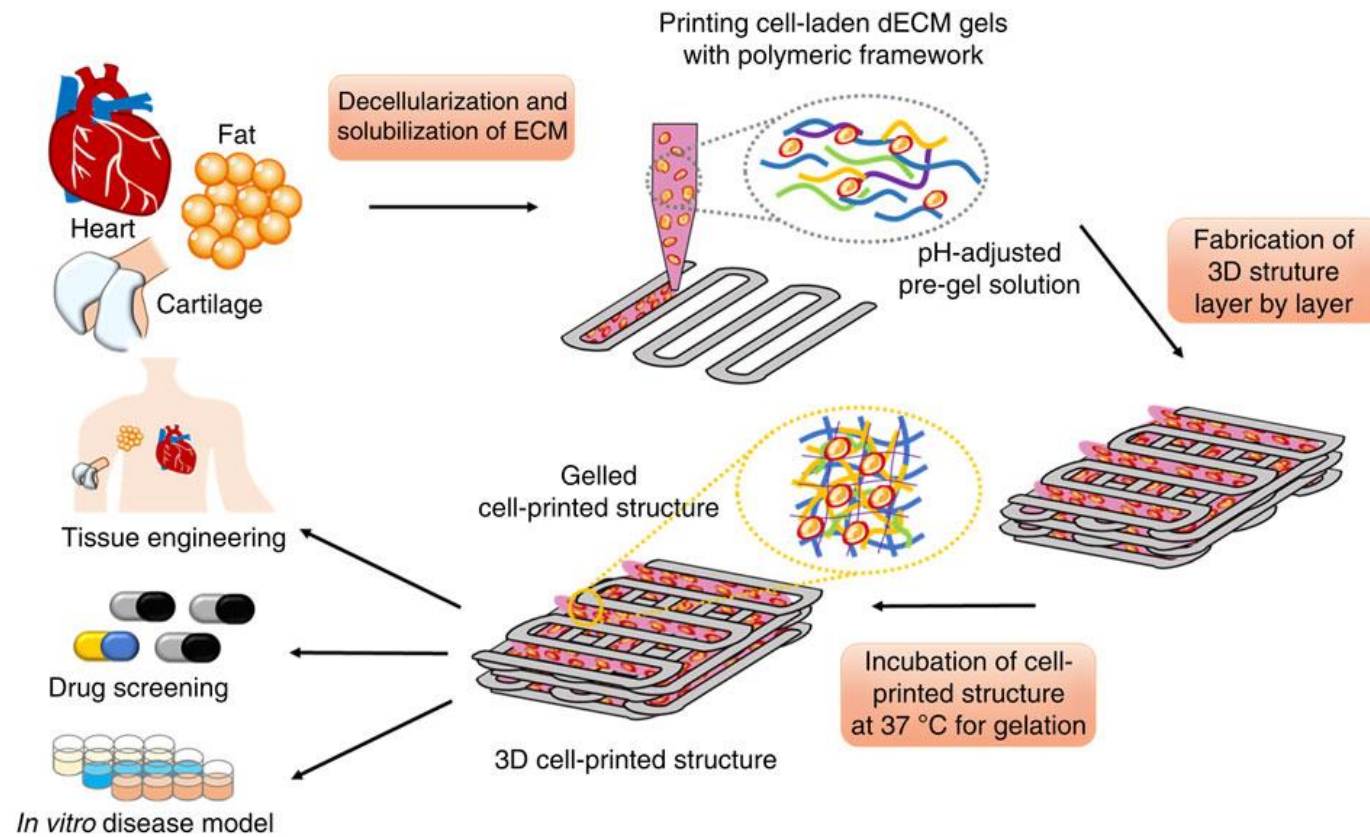


Bioprinting trend example: Spheroids for vasculature generation



Bioprinting: Extrusion-based + Cell seeded hydrogel

- Decellularized ECM (dECM)

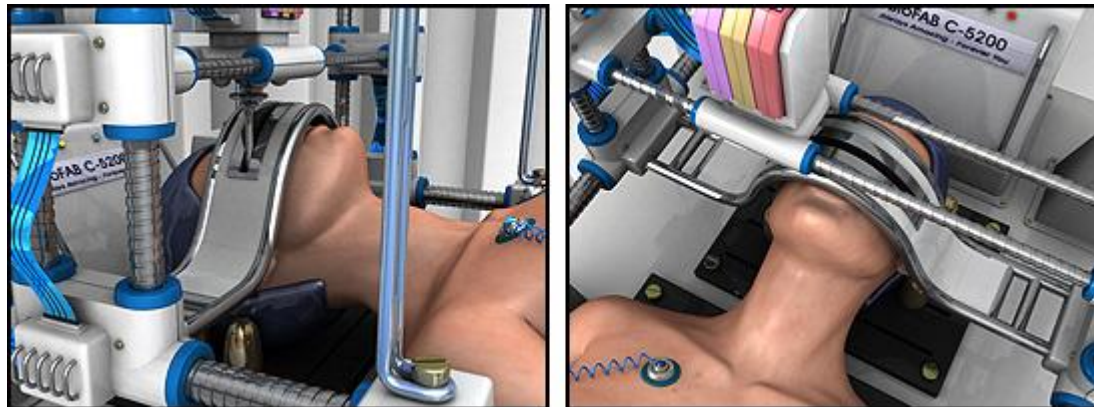
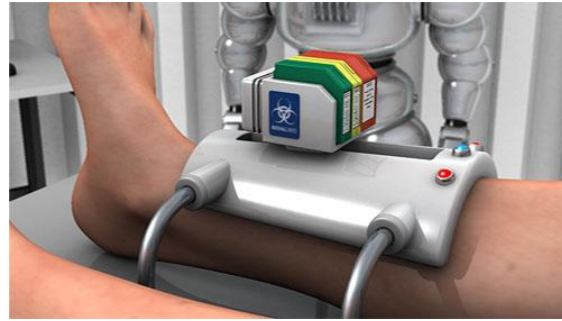


Commercially available machines for 3D printing

- 3D-Bioplotter from EnvisionTEC
- Fab@Home (Hydrogel compatible)
- Formiga P100 from EOS (CO2 laser sintering machine)
- ZPrinter[®] 310 Plus
 - Composite materials
 - Direct casting
 - Elastomers

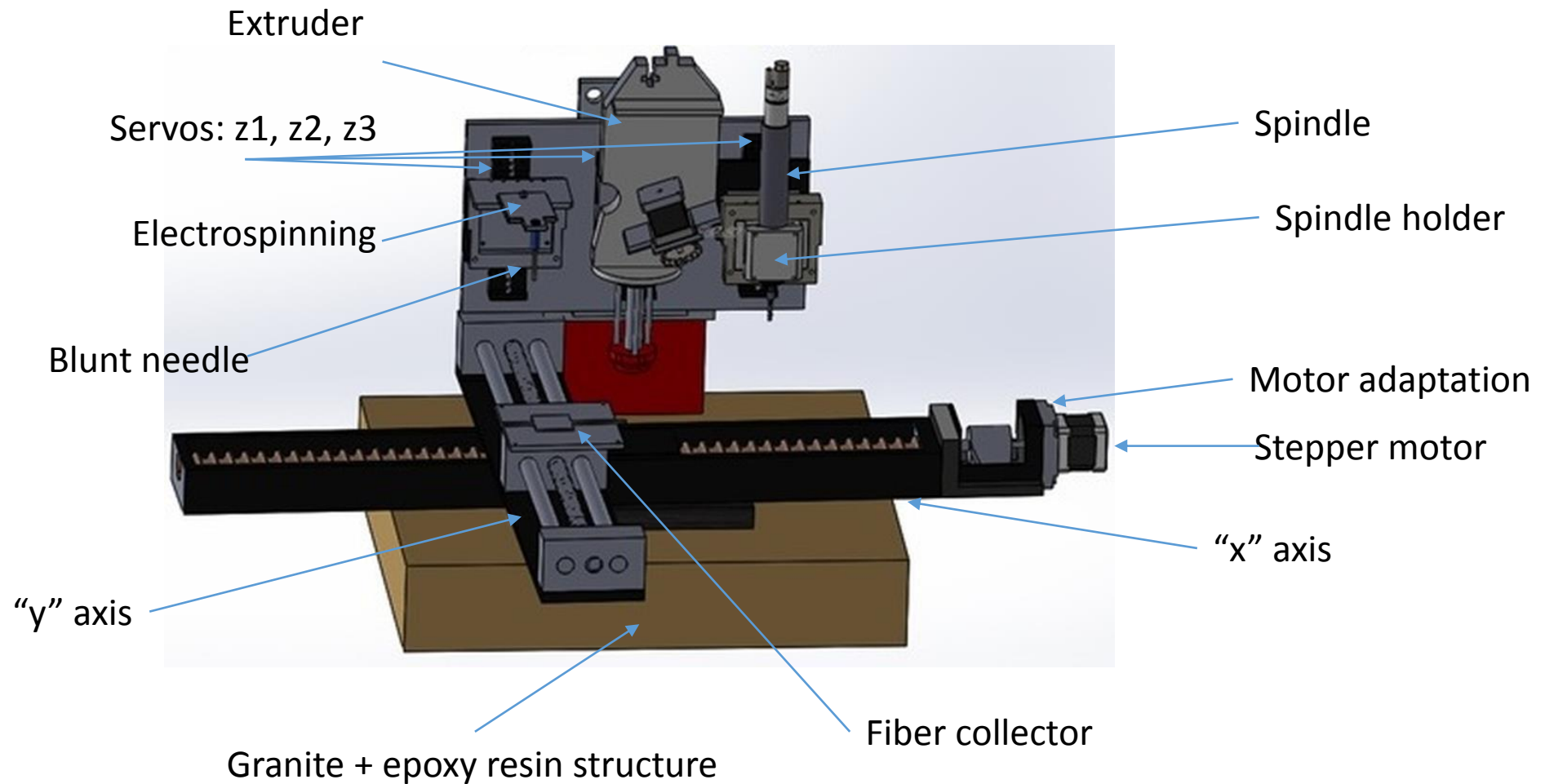
Future work

- In situ Bioprinting

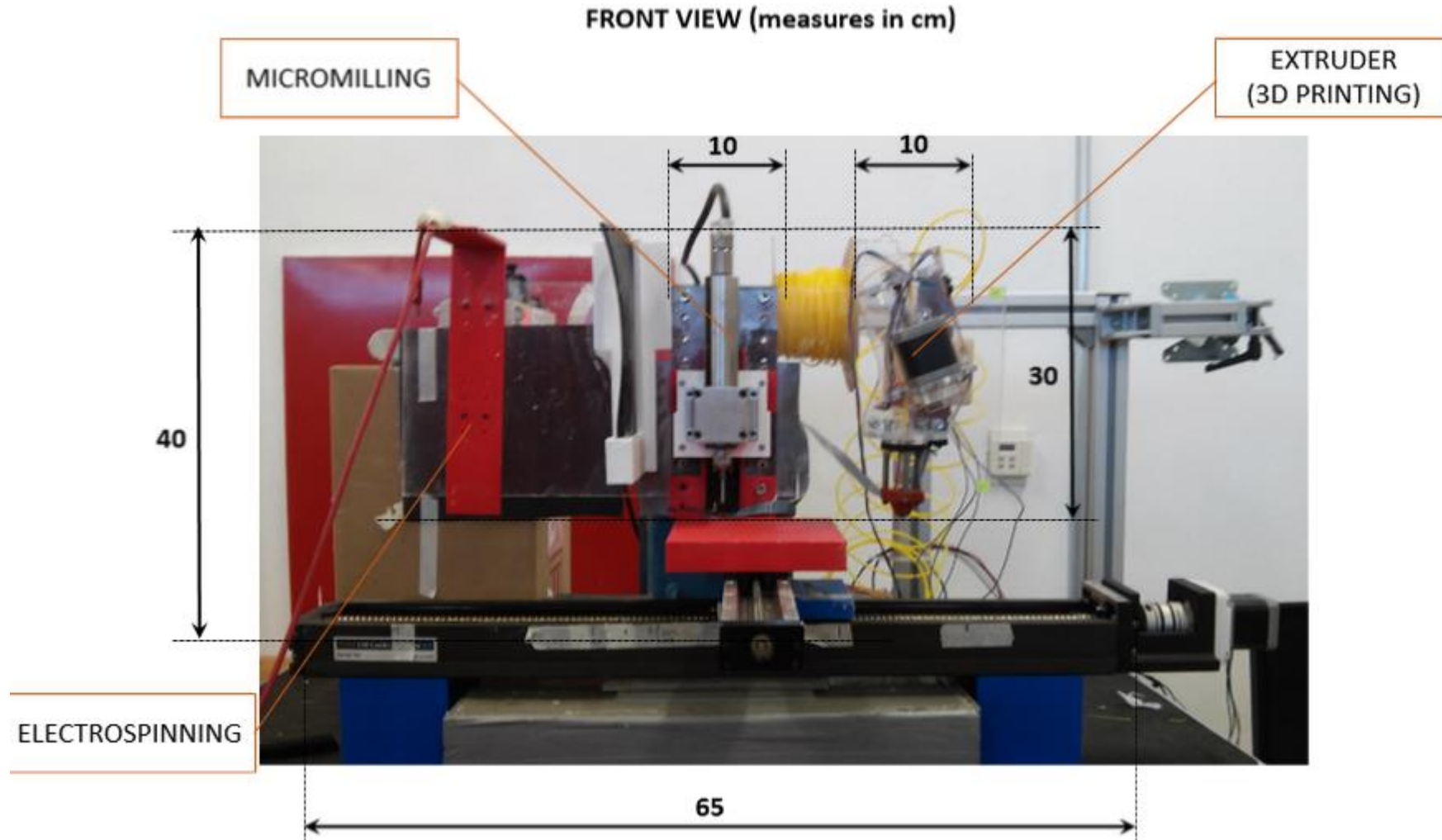


Current work at ITESM

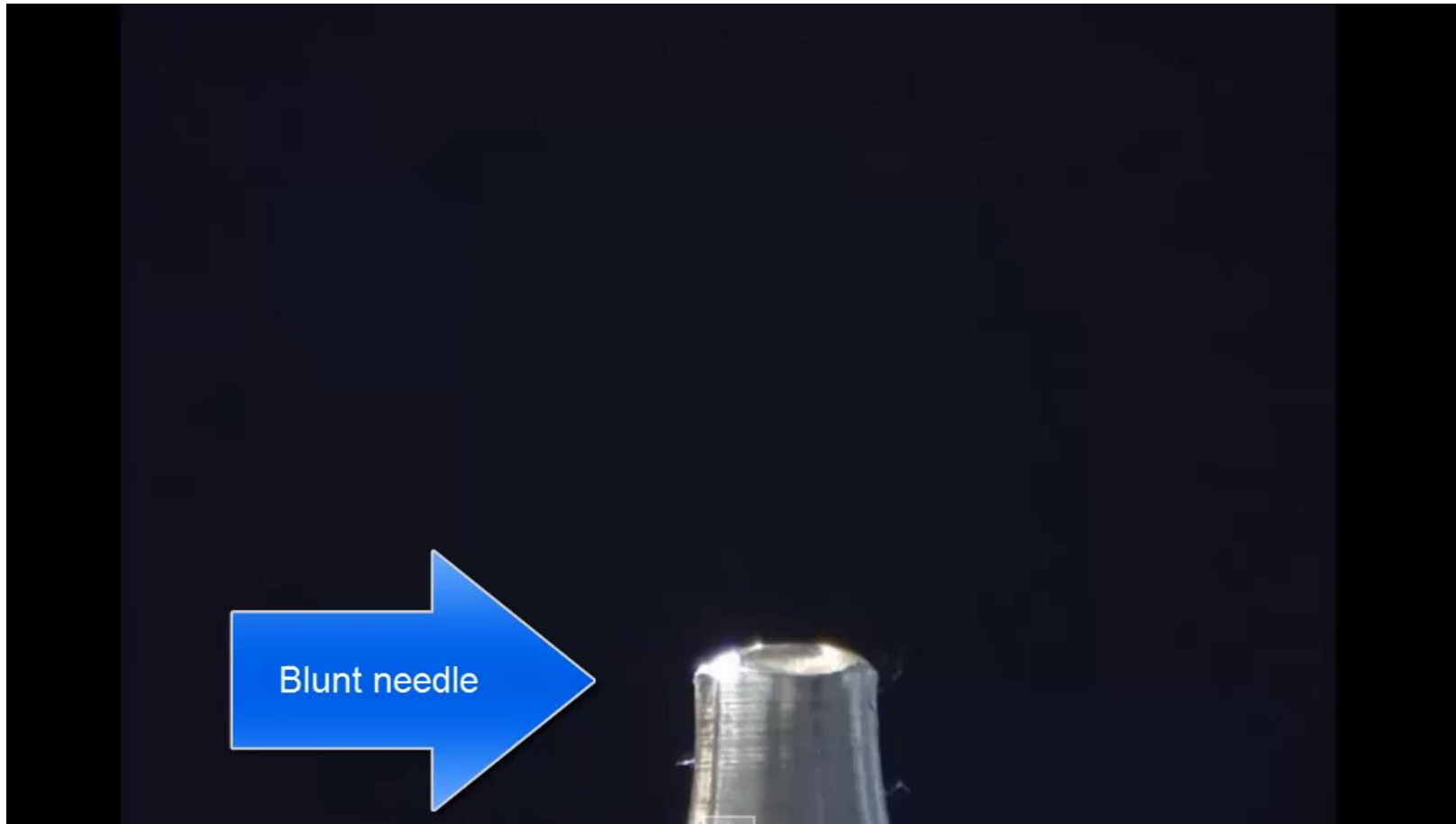
Current work on hybrid scaffold manufacturing at ITESM Monterrey



Current work on hybrid scaffold manufacturing at ITESM Monterrey

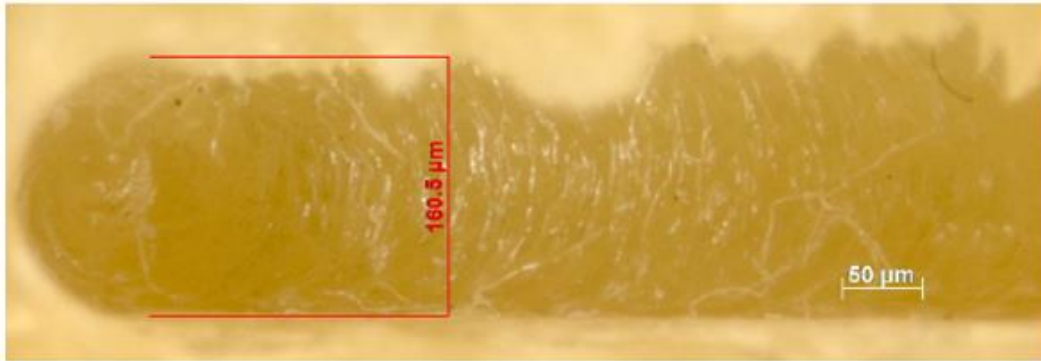


Electrospinning



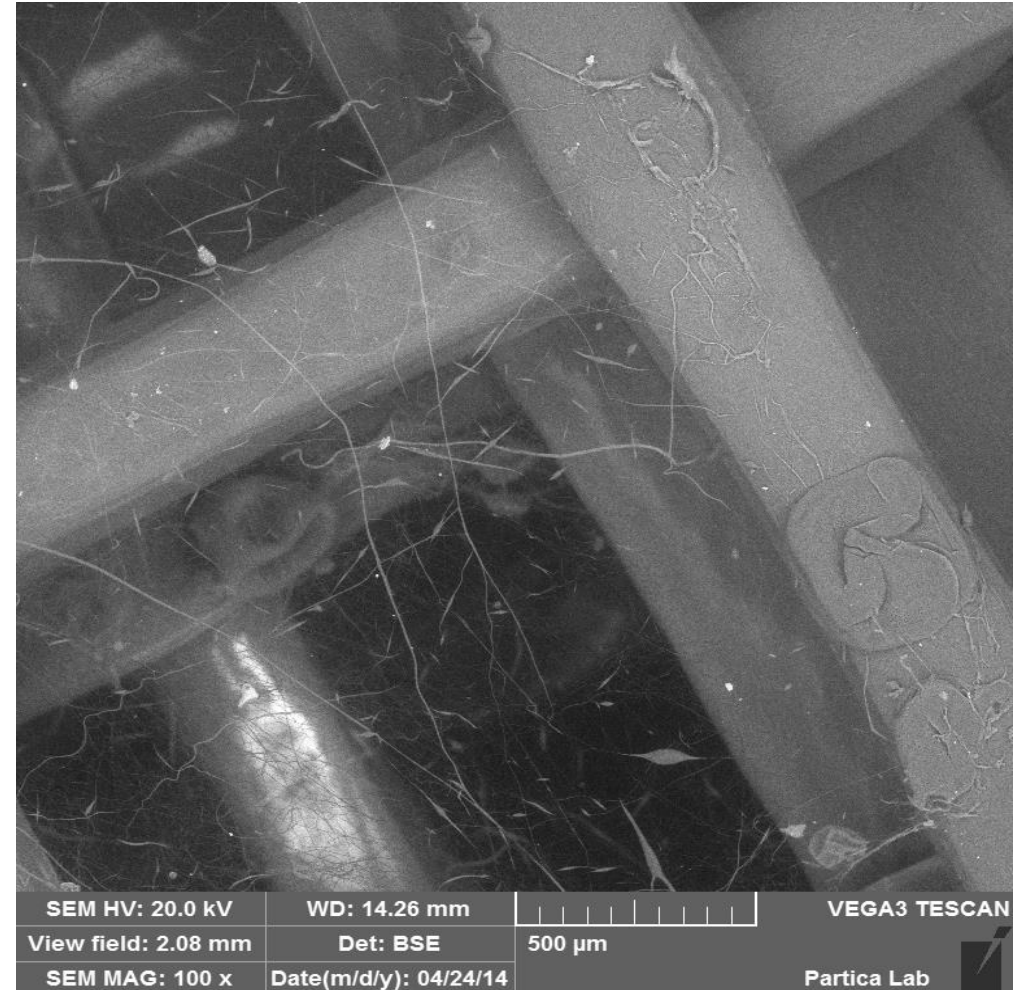
Results

- Micromilling
- 3D printing + Electrospinning

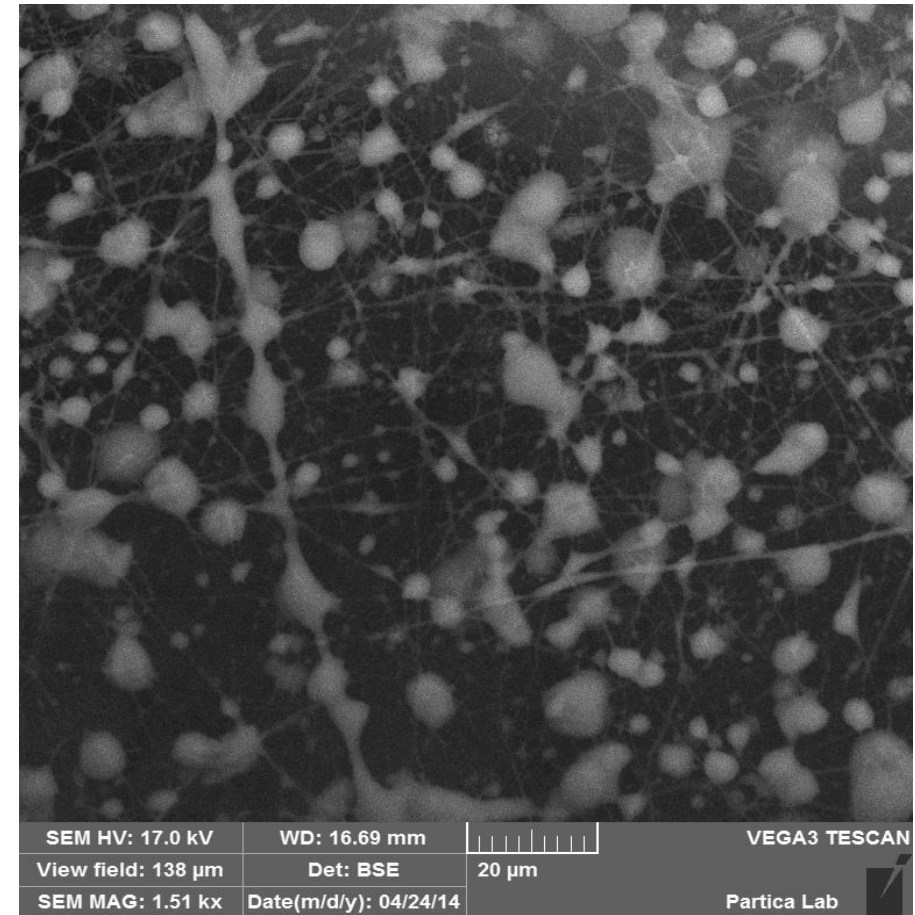
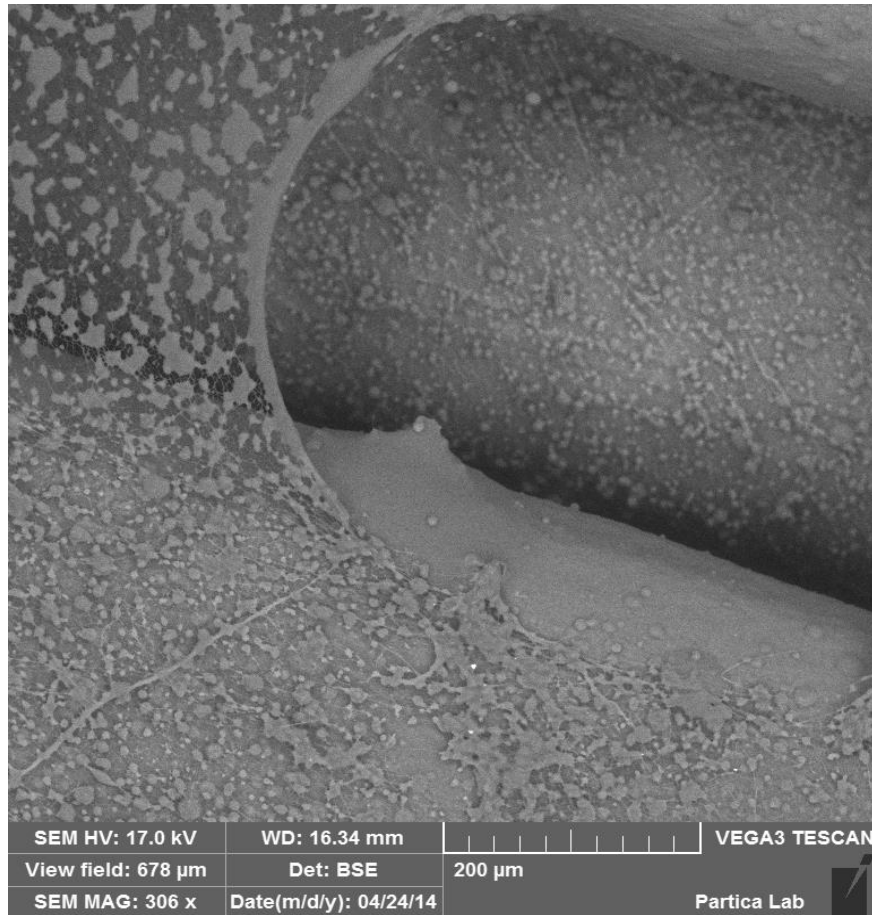


Combining 3D printing and electrospinning

- Thick fibers: PLA
- Thin fibers: Electrospun PCL



Combining 3D printing and electrospinning



Thank you

Dr. Christian Mendoza-Buenrostro

christian.mendoza@itesm.mx